



Smart Families, Smarter Models

Revit Family Creation Best Practices –
Updated 2025



Table of contents

01 Revit Family Types
Demystified

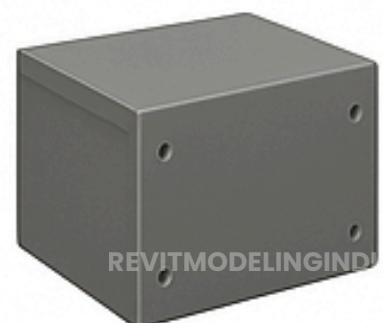
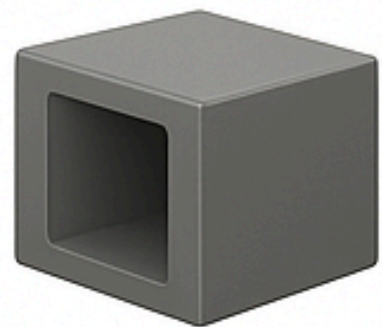


02 5 Foundational Steps Before
Building a Revit Family

03 ReviCAD Solutions' Revit
Family Success Story

04 8-Step Framework for Effective
Revit Family Creation

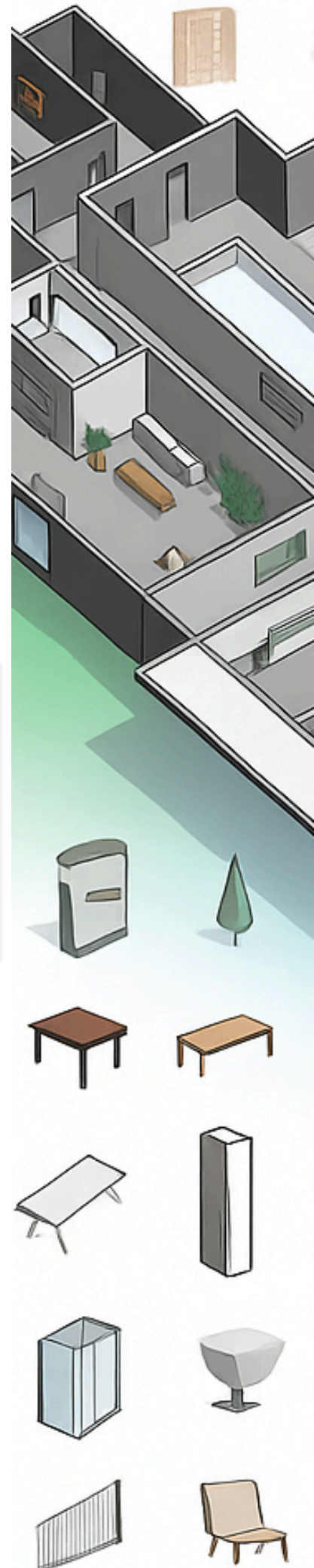
05 Future Trends in Revit Family
Creation



Smarter Family Creation in Revit 2025

In BIM, smart family creation isn't just a skill—it's a competitive advantage. This whitepaper is your go-to guide for building BIM-ready families in Revit 2025 that are efficient, scalable, and ready for anything your project demands.

Drawing on years of hands-on experience, our BIM experts share proven strategies to boost performance, enhance portability, and ensure consistency across Architecture, MEP, and Structure. You'll also get a clear look at emerging trends and practical tips to keep your workflows ahead of the curve. Whether you're new to Revit or a seasoned pro, this is your starting point for creating families that make your models smarter.



Revit Family Types

Foundations of Smart BIM Modeling

Autodesk Revit® offers three primary types of families, each serving a distinct purpose in BIM modeling:

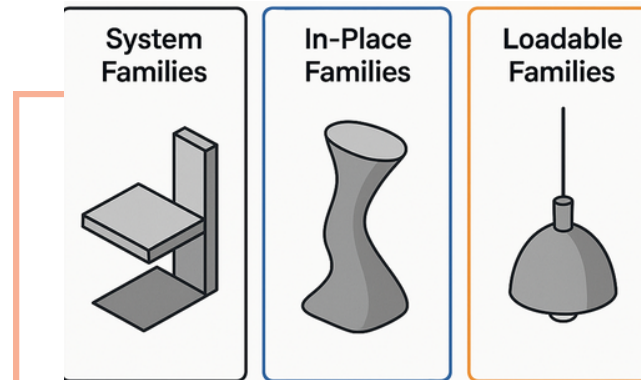
System Families: These families include core building components such as ceilings, walls, floors, roofs, and stairs. They are predefined in Revit and cannot be saved as external files. Users can duplicate and modify the properties of existing system families to create customized versions, but they cannot create entirely new system families from scratch.

In-Place Families: These families consist of one-off components created specifically for a single project. They are not intended for reuse, as their dimensions, properties, and behavior are unique to the current model. In-place families are typically used for custom architectural elements or complex shapes that do not require duplication across multiple projects.

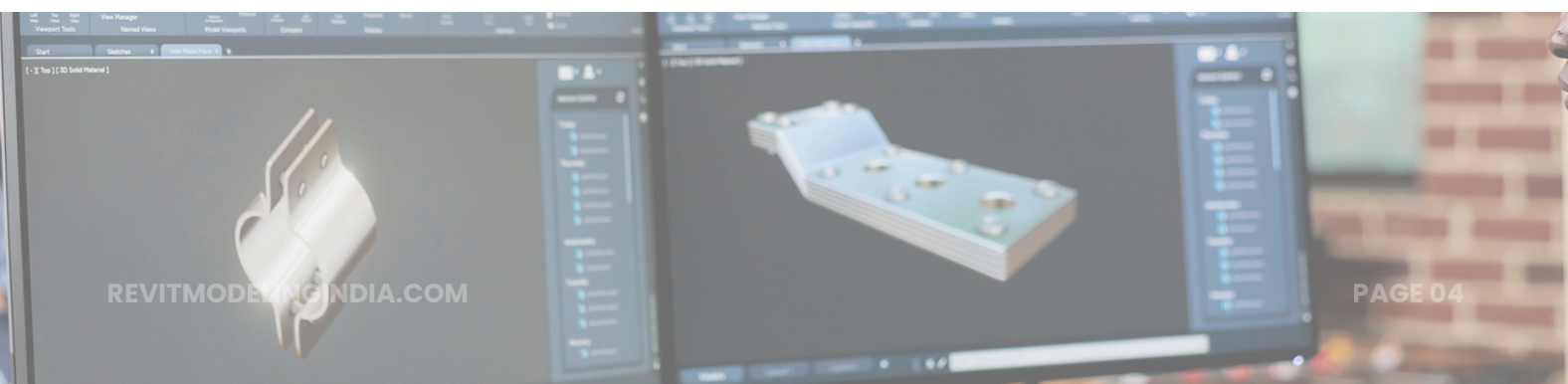
Loadable (Component) Families: These are standalone families that can be created and saved as .RFA files. Loadable families are reusable across multiple projects and can represent a wide range of components, such as furniture, fixtures, equipment, or MEP elements. With recent Revit versions, loadable families have become more advanced in terms of performance and flexibility.

- Users with parametric modeling expertise can create versatile families with flexible dimensions, materials, and properties.
- Parameters control the family's geometry and behavior, allowing users to dynamically modify size, material quantity, or visibility settings.
- The rendering tool in Revit enables the creation of realistic, high-quality visualizations of component families, enhancing the presentation and detailing of the model.

Example: Furniture, lighting fixtures, plumbing fixtures, and mechanical equipment.

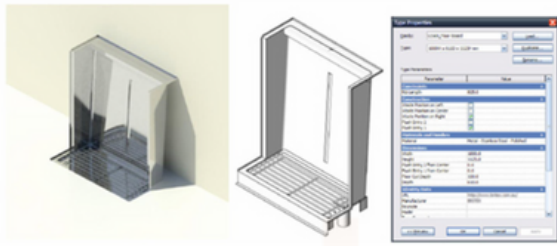


Tip: Loadable families are a core component in modular design workflows, making them relevant for today's projects.



5 Foundational Steps Before Building a Revit Family

Before building a Revit family, it's crucial to define its intended use within the project environment, as this determines the right level of complexity, parametric flexibility, and detail. Revit's dynamic parametric system ensures that any change made to a family automatically updates across the entire model, maintaining consistency while allowing multiple representations suited for different project phases and views.



Tip: Adding unnecessary parameters can increase the model size and negatively impact performance. Therefore, only include essential parameters.

1. Purpose of the Family: Before initiating family creation, it is important to consider the following key questions:


- Is the family based on manufacturer-specific content, or is it a generic family?
- What parameters will the family require (e.g., dimensions, materials, visibility controls)?
- Which template should be used for the family (e.g., wall-based, face-based, or generic model)?
- What is the primary purpose and intent behind creating the family?
- What level of detail (LOD) is required for the project phase?

2. Level of Detail (LOD): The level of detail defines how the family's geometry is displayed in different views and phases of the project. When creating a Revit family, the level of detail should be appropriate for the intended project stage (conceptual, design development, or construction documentation).

- Avoid over-modeling geometry that will not be visible in the final project view.
- *For example:*
 - When you create a table family with a drawer, you can only model the visible face of the drawer, not the internal compartments.
- Refrain from duplicating geometry that may be reused across multiple LODs.
- Revit updates encourage using simplified geometry (especially for large-scale projects) to improve model performance.
 - Using model lines and symbolic lines instead of complex geometry when possible.
 - Incorporating LOD control to reduce polygon count in coarse views.

Example: In furniture families, use 2D symbolic lines for plan views instead of detailed 3D geometry.



 *Tip: These practices enhance performance and reduce file size without compromising visual representation.*

3. Element Visibility: The visibility settings control which elements of the family are displayed in specific views.

- The visibility of each family element can be adjusted based on the project view settings, such as coarse, medium, or fine detail levels.
- This ensures that complex details are only shown in relevant views, improving model performance and readability.
- Recent Revit versions offer enhanced view filters and display overrides that significantly improve family visibility management.
- Using filters to control family visibility based on parameters (e.g., hide/show specific categories or dimensions in different views).
- Leveraging display overrides to apply graphic styles based on family parameters.

Example: Apply a filter to display only lighting fixtures with emergency features in a specific view.

4. Nesting Families: Nested families are families embedded within another family. Nesting can enhance modularity and reusability, but excessive nesting can impact performance.

- Minimize nesting by creating as much of the essential geometry as possible directly within the parent family.
- Use reference planes and labels to control and lock geometry instead of nesting multiple families.
- Limit nesting to two levels whenever possible. Excessive nesting can significantly slow down the model during updates.
- Nest only reusable, high-value components, such as door handles or light fixtures, which can be applied across multiple families.
- Be cautious when modifying nested families shared by multiple parent families.
 - When reloading, changes will automatically update all other families sharing the same nested family.
 - To prevent unintended updates, deselect the "Shared" option in the "Category and Parameters" dialogue box.
- Limit nested families to a maximum of six per family to prevent performance issues.
- Recent Revit versions support shared parameters in nested families, making them more interoperable and flexible.

- Using shared parameters to control nested family visibility, dimensions, and material properties in the main family.
- Ensuring nested families are correctly categorized for scheduling and filtering.

Example: A door family with a nested handle can have a shared parameter that allows users to control the handle material directly from the project environment.

Use of Adaptive Components:

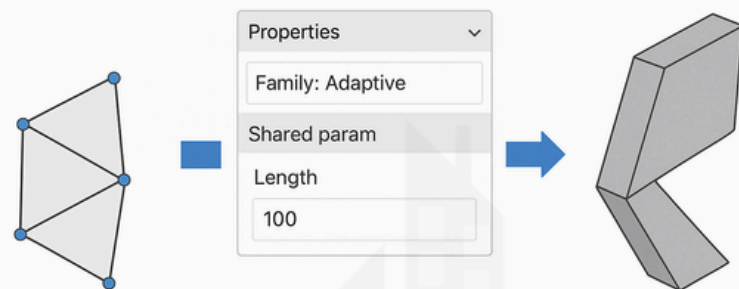
Introduce the concept of adaptive components for creating complex, flexible geometry within nested families.

Adaptive components allow for:

- Flexible positioning in irregular or non-orthogonal conditions.
- Improved parametric adaptability in curtain systems, facades, and irregular structures.

Example: Creating custom railings or facade panels with adaptive points to fit complex geometries.

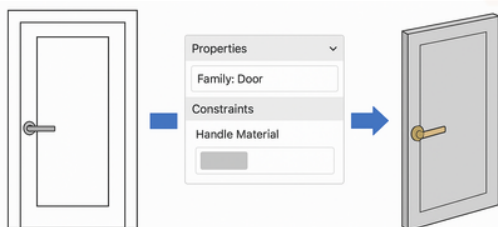
ADAPTIVE COMPONENTS AND SHARED PARAMETERS REFLECT ADVANCED REVIT WORKFLOWS



5. Family Size and Performance Optimization:

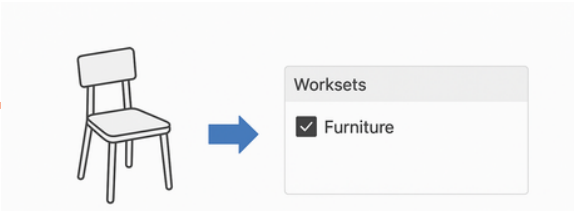
Large family files can adversely impact BIM model performance. To optimize performance:

- Audit and purge families before final upload to remove unnecessary data.
- Keep nested families to a minimum and ensure they are also audited and purged.
- Use minimal bitmaps and custom materials to avoid bloating the family size.
- Model only what is necessary for the required LOD to prevent performance issues.
- Avoid using CAD imports or images when creating a family.
- Never explode CAD elements in Revit families, as this creates excessive linework and increases file size.



Tip: Adaptive components and shared parameters reflect advanced Revit workflows, making the whitepaper more future-ready.

Example: Assigning large, frequently used families (e.g., furniture) to a dedicated workset for better management.

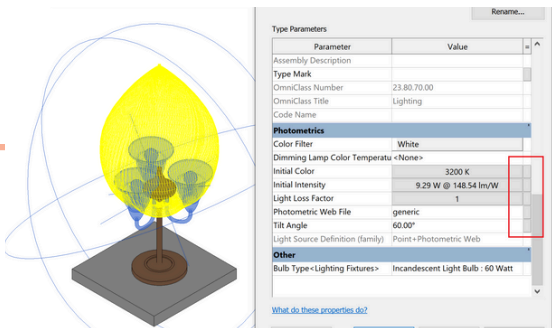


Tip: Type Catalogs streamline workflows, especially for MEP families or large component libraries, making it a valuable addition.

Family Types and Type Catalogs:

- Mention the use of Type Catalogs, which allow users to define multiple variations of the same family using a CSV file.
- This enhances efficiency by enabling batch loading of multiple family types with predefined parameters.

Example: A lighting fixture family could have multiple variations with different lumen outputs, color temperatures, and dimensions—all managed via a Type Catalog.



Tip: Type Catalogs streamline workflows, especially for MEP families or large component libraries, making it a valuable addition.

Parametric Formulas and Advanced Constraints: In recent Revit versions, advanced parametric formulas and constraints allow for:

- More complex and adaptive families, enabling users to create families that dynamically respond to project conditions.
- Use of IF, AND, OR, and NOT statements in family parameters to control behavior.

Example: In mechanical systems, create a formula that automatically adjusts the size of ducts based on airflow requirements.

Utilize Revit Family Standards: Family naming conventions and standards have become increasingly important for collaboration and interoperability in recent versions of Revit.

- Consistent family naming conventions (e.g., "Furn_Chair_TypeA" instead of "chair1").
- Standardizing parameter names and values to ensure consistency across projects.

Example: Following ISO 19650 naming standards for families to improve project coordination.



Tip: Work-sharing compatibility and standardized family naming enhance BIM project efficiency and collaboration.

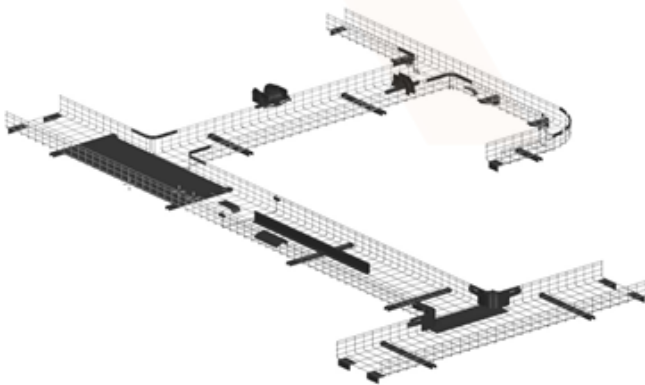
A Revit Modeling India customer success story

Customer: A global leader in infrastructure and connectivity solutions

Project Type: Development of 250+ parametric Revit families for critical infrastructure components.

Challenges:

- Limited product visibility due to inconsistent Revit content.
- Increased design errors and rework due to non-standardized families.
- Time-consuming manual modifications affect productivity.



Solutions Delivered:

- Developed LOD 350 and LOD 400 Revit families for precise 3D geometry, MEP connectors, and accurate metadata.
- Ensured seamless BIM integration, enhancing model consistency.
- Standardized parametric features for flexibility in design applications

Results Achieved:

- 15% increase in market reach due to improved BIM adoption.
- Accelerated project timelines by reducing manual customization efforts.
- Enhanced product specification accuracy, minimizing design rework.



15% increase in market reach due to improved BIM adoption.



Building Smarter BIM

8 Step framework for effective Revit family creation

The process of creating a Revit family can be effectively broken down into the following steps:

1 Choose the Best Family Template

- Selecting the appropriate family template is the first and most crucial step, as it defines the type and category of the family.
- The template determines the parameters, visibility settings, and host behavior (e.g., wall-based, face-based, or free-standing).
- In Revit 2025, users can now leverage enhanced template customization options to predefine family standards, streamlining the creation process.

Best Practice:

Use standard naming conventions for templates and ensure the correct category (e.g., furniture, plumbing, MEP) is assigned to maintain consistency across projects and compatibility with schedules and filters.

2 Define the General Layout of the Family

- **Define Framework:** Use reference planes to set shape, dimensions, and position, ensuring proper origin placement for accurate insertion.
- **Reference Plane Tips:** Use horizontal/vertical planes for centering, and model in the correct view (plan, elevation, section) for precision.
- **Advancements:** Improved plane locking/snapping for alignment and enhanced flexibility for irregular shapes in recent Revit versions.

Best Practice:

- *Use named reference planes to improve clarity and consistency.*
- *Assign origin points carefully to avoid misalignment during insertion.*

3 Create and Associate Parameters

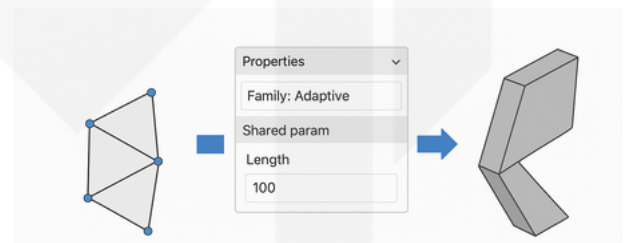
- Add parameters to control the dimensions, materials, and visibility of the family.
- Use family types and instance parameters effectively to allow for variations within the same family.
- **Geometry Creation Tools:**
 - Use extrusions, blends, revolves, sweeps, and swept blends for solid geometry.
 - Create void forms to cut or modify existing geometry.
- **Revit 2025 Enhancements:**
 - Introduced Conditional Parameter Logic, allowing users to create more complex formulas with IF, AND, OR, and NOT statements.
 - Improved shared parameters: More efficient handling of shared parameters across nested families.

Best Practice:

- Keep parameters simple and clear to avoid overcomplicating the family.
- Use type catalogs for large families with multiple variations.

4 Test the Family

- Always test the family by loading it into a sample project to verify its behavior.
- Modify parameter values to confirm they respond accurately and the family flexes as expected.
- Check:
 - Alignment and snapping behavior
 - Consistent scaling and dimension changes
 - Visibility in different view types (elevation, plan, and section)
- **Revit 2025 Enhancements:**
 - Improved Family Editor performance reduces testing time, providing faster feedback on parameter adjustments.



Best Practice:

- Use temporary project files for family testing to avoid cluttering the actual project.
- Verify that nested families behave correctly with host families.

5 Apply Formulas and Arrays

- Utilize formulas and arrays to automate and control family behavior.
- Use formulas for dynamic dimensioning and parameter control, such as:
 - Length = Width * 2 for automated dimension scaling.
 - IF statements to manage conditional visibility.
- Use arrays to create repeating components (linear or radial).
- **Revit 2025 Enhancements:**
 - Optimized array performance reduces processing time, making it faster and more efficient, even with complex families.
 - New parametric formula suggestions simplify complex expressions.

Best Practice:

- Use arrays sparingly to avoid performance degradation.
- Group and lock array elements to maintain alignment.

6 Save the Family

- Once the family is fully modeled and tested, save it with a clear and descriptive name.

- Organize families into standardized folders to ensure accessibility and version control.
- Use the .RFA format for families and .RFT for templates.

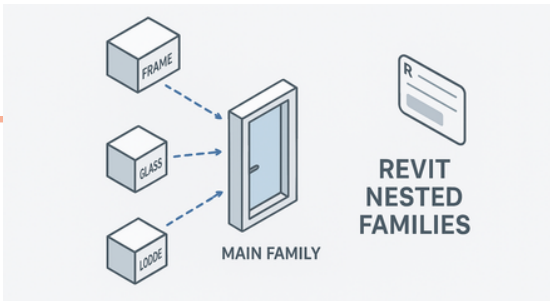
Best Practice:

- Store families in a centralized library for consistent access across projects.
- Use versioning conventions to avoid conflicts (e.g., "Door_TypeA_v1.1").

7 Best Practices for Revit Family Creation

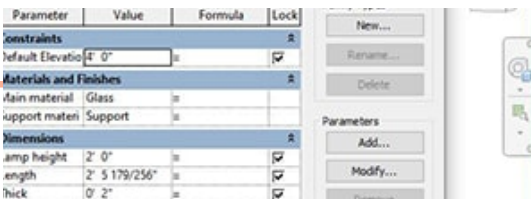
To optimize performance and maintain model efficiency, follow these best practices:

- Stay Minimal:
 - Use symbolic lines and masking regions instead of complex geometry to reduce file size.
 - Apply visibility settings to simplify details in lower LOD views.
- Limit Nested and Parameterized Families:
 - Avoid overusing nested families and excessive parameters, as they increase complexity and slow down model performance.



Revit 2025 Tip: Use shared nested families for better project management.

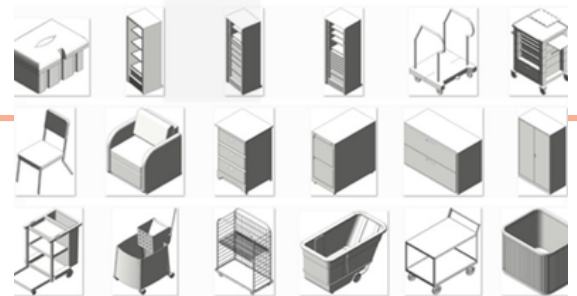
- **Use Families Instead of Groups:** Families are more efficient than groups in large projects, as groups require more processing time during updates.
- **Avoid Overusing Voids:** Excessive voids reduce performance. Use solids with cut geometry instead of multiple voids.
- **Leverage Lightweight Components:** Use family components instead of in-place families for repeatable elements to improve performance.
- **Purge Unused Families:** Regularly purge unused families to reduce project file size.



Revit 2025 Tip: Use new family performance metrics to identify heavy families and optimize them.

8 Avoid Common Pitfalls

- **Never Explode CAD Files:**
 - Exploding CAD drawings into families creates unnecessary lines and layers, reducing performance.
 - Use the "Import from File" tool to manage external CAD content efficiently.
- **Limit 3D Detail for Large Projects:**
 - Use low and high-detail versions of families for different views.
 - Toggle between them using visibility parameters to improve model efficiency.
- **Eliminate Redundant Families:**
 - Regularly remove unused families to keep the project file lean and efficient.



Revit 2025 Tip: Utilize the "Purge and Replace" tool to clean up families while maintaining parameter consistency.



Future Trends in Revit Family Creation

Revit Family Creation is set for major advancements, driven by AI, enhanced parametric capabilities, and cloud workflows. AI will automate repetitive tasks and offer smart performance optimization, while improved parametrics will allow families to adapt dynamically to complex requirements with minimal effort.

Greater interoperability through standards like IFC will boost collaboration across disciplines, and cloud-based solutions will enable real-time library management from anywhere. These innovations aim to improve efficiency, streamline workflows, and keep BIM professionals ahead in the evolving AEC landscape. Embracing these trends will be critical for firms aiming to deliver high-performance, future-ready BIM solutions.

Elevating BIM Efficiency with Revit Families

Revit family creation is central to efficient BIM workflows. By applying best practices—planning, precise geometry, optimized parameters, and quality control—AEC professionals can create functional, scalable, and reusable families that enhance model accuracy, streamline collaboration, reduce rework, and improve project timelines.

As BIM adoption grows, standardized, high-performing families are critical for efficiency and data consistency. Following the guidelines in this whitepaper empowers organizations to deliver higher-quality projects and stay competitive. The included customer success story highlights how these practices reduce modeling time and boost design accuracy, proving that effective family creation drives measurable results and elevates BIM capabilities in an evolving AEC landscape.



Check your BIM Readiness with RMI

Start small, measure progress, and partner wisely. If you'd like [help reviewing your BIM readiness](#) or need support with execution, our team at Revit Modeling India is here to help.

With over a decade of experience, Revit Modeling India has empowered global clients through numerous BIM projects, earning recognition as one of the Top 8 BIM service providers.

Ready to take your BIM workflows to the next level?

Explore more resources, expert insights, and tailored solutions on our website.

Visit: [Revitmodelingindia.com](https://www.revitmodelingindia.com)

References

- Autodesk Revit Documentation: Family Creation Overview. Retrieved from: [Autodesk Knowledge Network](#)
- National BIM Standard – United States (NBIMS-US): Part 4: BIM Execution Plan. Retrieved from: [National Institute of Building Sciences](#)
- BuildingSMART International: BIM Standards and Best Practices. Retrieved from: [buildingSMART](#)
- AEC (UK) BIM Protocol: Revit Family Creation Standards. Retrieved from: [AEC UK](#)
- [Autodesk Revit 2025](#) Features Documentation.